

MVR MONITORING SERVICE

MVR MONITORING TRIGGERS

J. J. Keller's MVR Monitoring Service complies with the FMCSA's definition of an Employee Notification System in the majority of states. For states where this service does not meet the definition, the service will automatically order an MVR so the driver's file contains an up-to-date MVR for their Annual Review.



STATE	MVR REPORTING TRIGGERS		Violation Monitoring	When (Violation Monitoring)	Status & Suspension Monitoring	When (Status & Suspension Monitoring)	Annual Review Required?	State Requires Annual MVR?	CDL History Years	DL History Years
Alabama	New Violation Out of State Violation License Status (Negative)	License Status (Positive, only for license reinstatement) New Accident	Monthly	1st week of the month typically	Monthly	1st week of the month typically	No	No	5 (INST) 3 (OVN)	5 (INST) 3 (OVN)
Alaska	New Violation		Monthly	1st week of the month typically	No	N/A	No	No	3	3
Arizona*	New Violation License Status (Negative & Positive)	License Expiration / Renewal Medical Certification Expiration License Class	Monthly	Throughout the month	Bi-Weekly	N/A	Yes	No	5	3
Arkansas	New Violation Out of State Violation	License Status (Negative Only) New Accident	Monthly	1st week of the month typically	Monthly	1st week of the month typically	No	No	3	3
California*	New Violation Out of State Violation Future Suspensions/ Revocations	License Status (Negative Only) New Accident License Status (May receive notification of upcoming expiration but not on the expiration date)	Daily M-F	Every weekday, government holidays excluded	Daily M-F	Every weekday, government holidays excluded	Yes	Yes	3	3
Colorado	New Violation Out of State Violation	License Status (Negative Only)	Monthly	2nd week of the month typically	Monthly	2nd week of the month typically	No	No	7	7
Connecticut*	New Violation License Expiration	License Status (Negative & Positive)	Monthly	Throughout the month	Weekly	Weekly	Yes	No	3	3

MVR MONITORING SERVICE (CONT.)

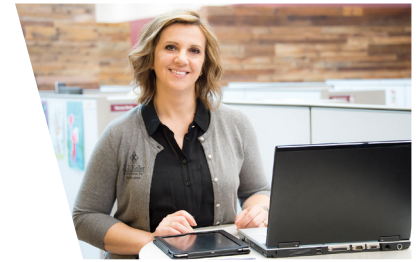
MVR MONITORING TRIGGERS



STATE	MVR REPORTING TRIGGERS		Violation Monitoring	When (Violation Monitoring)	Status & Suspension Monitoring	When (Status & Suspension Monitoring)	Annual Review Required?	State Requires Annual MVR?	CDL History Years	DL History Years
Delaware	New Violation Out of State Violation License Status (Negative & Positive) License Expiration	Medical Certification Expiration/Change License Class License Endorsements HazMat Endorsements	Monthly	1st week of the month typically	Monthly	1st week of the month typically	No	No	3	3
District of Columbia	License Status (Negative & Positive)	Medical Certification (self cert, cert status, exp date)	No	N/A	Monthly	1st week of the month typically	No	No	3	3
Florida	New Violation Out of State Violation License Status (Negative & Positive)	License Expiration New Accident	Weekly	1st week of the month typically	Weekly	Weekly	No	No	7	3
Georgia	New Violation Out of State Violation	License Status (Negative Only) License Expiration	Monthly	1st week of the month typically	Monthly	1st week of the month typically	No	No	7	3
Hawaii	New Violation	Out of State Violation	Monthly	1st week of the month typically	No	N/A	No	No	3	3
Idaho	New Violation Out of State Violation	Future Suspensions/ Revocations License Status (Negative Only)	Monthly	1st week of the month typically	Monthly	1st week of the month typically	No	No	3	3
Illinois*	New Violation Future Suspensions/ Revocations	License Status (Negative & Positive) *the last 4 digits of the SSN are required for license status monitoring in this state	Monthly	1st week of the month typically	No	N/A	Yes	No	3	3

MVR MONITORING SERVICE (CONT.)

MVR MONITORING TRIGGERS



STATE	MVR REPORTING TRIGGERS		Violation Monitoring	When (Violation Monitoring)	Status & Suspension Monitoring	When (Status & Suspension Monitoring)	Annual Review Required?	State Requires Annual MVR?	CDL History Years	DL History Years
Indiana*	New Violation Out of State Violation	License Status (Negative & Positive) License Expiration	Monthly	1st week of the month typically	Weekly	Weekly	Yes	No	3	3
Iowa*	New Violation		Monthly	1st week of the month typically	No	N/A	Yes	No	3	3
Kansas	New Violation Out of State Violation License Status (Negative Only)	License Expiration Medical Certification Expiration/Change	Monthly	1st week of the month typically	Monthly	1st week of the month typically	No	No	3	3
Kentucky	New Violation Out of State Violation		Monthly	Throughout the month	No	N/A	No	No	3	3
Louisiana	Future Suspensions/ Revocations	License Status (Negative Only)	Daily	1st week of the month typically	Daily	Every weekday, government holidays excluded	No	No	3	3
Maine	New Violation Out of State Violation License Status (Negative Only) New Accident	Medical Certification Expiration/Change License Class License Endorsements HazMat Endorsements	Monthly	1st week of the month typically	Monthly	1st week of the month typically	No	No	3	3

MVR MONITORING SERVICE (CONT.)

MVR MONITORING TRIGGERS



STATE	MVR REPORTING TRIGGERS		Violation Monitoring	When (Violation Monitoring)	Status & Suspension Monitoring	When (Status & Suspension Monitoring)	Annual Review Required?	State Requires Annual MVR?	CDL History Years	DL History Years
Maryland*	New Violation Out of State Violation Future Suspensions/ Revocations License Status (Negative & Positive) License Expiration	License Renewal New Accident Medical Certification Expiration/Change License Class License Restrictions License Endorsements HazMat Endorsements	Daily	Every weekday, government holidays excluded	Daily	Every weekday, government holidays excluded	Yes	Yes	3	3
Massachusetts	New Violation	License Status (Negative Only)	Monthly	1st week of the month typically	Monthly	1st week of the month typically	No	No	3	3
Michigan	New Violation Out of State Violation Future Suspensions/ Revocations	License Status (Negative & Positive) License Expiration License Renewal	Weekly	Weekly on Monday	Weekly	Weekly on Monday	No	Yes	3	3
Minnesota	New Violation Out of State Violation License Status (Negative & Positive) License Expiration License Renewal	New Accident Medical Certification Expiration/Change License Class License Restrictions License Endorsements HazMat Endorsements	Daily	Every weekday, government holidays excluded	Daily	Every weekday, government holidays excluded	No	No	3	3
Mississippi	New Violations	Out of State Violations	Monthly	Unknown	No	N/A	No	No	3	3

MVR MONITORING SERVICE (CONT.)

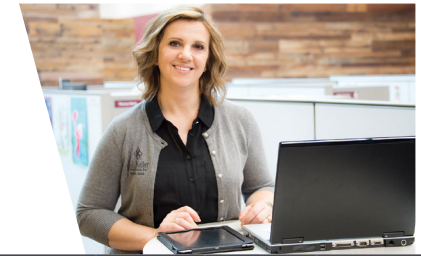
MVR MONITORING TRIGGERS



STATE	MVR REPORTING TRIGGERS		Violation Monitoring	When (Violation Monitoring)	Status & Suspension Monitoring	When (Status & Suspension Monitoring)	Annual Review Required?	State Requires Annual MVR?	CDL History Years	DL History Years
Missouri	New Violation Out of State Violation License Status (Negative & Positive) License Expiration License Renewal	New Accident Medical Certification Expiration/Change License Class License Restrictions License Endorsements HazMat Endorsements	Daily	Every weekday, government holidays excluded	Daily	Every weekday, government holidays excluded	No	No	3	3
Montana	New Violation Out of State Violation	License Status (Negative Only) New Accident	Monthly	2nd week of the month typically	Monthly	2nd week of the month typically	No	No	3	3
Nebraska	New Violation Out of State Violation	License Status (Negative Only) New Accident	Monthly	1st week of the month typically	Monthly	1st week of the month typically	No	No	3	3
Nevada	New Violation	Out of State Violation	Monthly	1st week of the month typically	No	N/A	No	No	3	3
Nevada	New Violation	Out of State Violation	Monthly	1st week of the month typically	No	N/A	No	No	3	3
New Hampshire*	New Violation Out of State Violation License Status (Negative & Positive)	License Expiration License Renewal License Class	Monthly	1st week of the month typically	Monthly	1st week of the month typically	Yes	No	3	3
New Jersey*	New Violation License Status (Negative & Positive)*	* Driver current zip code is required for license status monitoring in this state	Monthly	Throughout the month	Bi-Monthly	N/A	Yes	No	3	3

MVR MONITORING SERVICE (CONT.)

MVR MONITORING TRIGGERS



STATE	MVR REPORTING TRIGGERS		Violation Monitoring	When (Violation Monitoring)	Status & Suspension Monitoring	When (Status & Suspension Monitoring)	Annual Review Required?	State Requires Annual MVR?	CDL History Years	DL History Years
New Mexico	New Violation Out of State Violation License Status (Negative Only)	License Expiration Medical Certification Expiration/Change License Class	Monthly	1st week of the month typically	Monthly	1st week of the month typically	No	No	3	3
New York	New Violation Out of State Violation Future Suspensions/ Revocations License Status (Negative & Positive) License Expiration	License Renewal New Accident Medical Certification Expiration/ Change License Class License Endorsements HazMat Endorsements	Daily	Every weekday, government holidays excluded	Daily	Every weekday, government holidays excluded	No	No	3	3
North Carolina	New Violation Out of State Expiration	License Status (Negative & Positive)	Monthly	1st week of the month typically	Weekly	Weekly	No	No	7	7
North Dakota*	New Violation License Status (Negative & Positive)	License Expiration	Monthly	1st week of the month typically	Weekly	Weekly	Yes	No	3	3
Ohio	New Violation Out of State Violation License Status (Negative & Positive) License Expiration License Renewal New Accident	Medical Certification Expiration/Change License Class License Restrictions License Endorsements HazMat Endorsements	Monthly	Throughout the month	Monthly	Throughout the month	No	No	3	3

MVR MONITORING SERVICE (CONT.)

MVR MONITORING TRIGGERS



STATE	MVR REPORTING TRIGGERS		Violation Monitoring	When (Violation Monitoring)	Status & Suspension Monitoring	When (Status & Suspension Monitoring)	Annual Review Required?	State Requires Annual MVR?	CDL History Years	DL History Years
Oklahoma*	New Violation		Monthly	1st week of the month typically	No	N/A	Yes	No	3	3
Oregon	Convictions New Accidents	License Status (Negative Only)	Monthly	2nd Sunday of each month	Monthly	2nd Sunday of each month	No	No	5	5
Pennsylvania*	New Violation License Status (Negative & Positive)	License Expiration	Monthly	1st week of the month typically	Bi-monthly	Unknown	Yes	No	3	3
Rhode Island	New Violation Out of State Violation	License Status (Negative Only) New Accident	Monthly	1st week of the month typically	Monthly	1st week of the month typically	No	No	3	3
South Carolina	New Violation Out of State Violation	License Status (Negative Only) License Expiration	Monthly	2nd week of the month typically	Monthly	1st week of the month typically	No	No	7	7
South Dakota*	New Violation	License Status (Negative Only)	Monthly	1st week of the month typically	Monthly	Unknown	Yes	No	3	3
Tennessee	New Violation Out of State Violation License Status (Negative & Positive) License Expiration License Renewal	New Accident Medical Certification Expiration/Change License Class License Restrictions License Endorsements HazMat Endorsements	Monthly	2nd week of the month typically	Monthly	2nd week of the month typically	No	No	3	3

MVR MONITORING SERVICE (CONT.)

MVR MONITORING TRIGGERS



STATE	MVR REPORTING TRIGGERS		Violation Monitoring	When (Violation Monitoring)	Status & Suspension Monitoring	When (Status & Suspension Monitoring)	Annual Review Required?	State Requires Annual MVR?	CDL History Years	DL History Years
Texas*	New Violation Out of State Violation License Status (Negative & Positive) Additional Alert Triggers: The record has Admin Status = "Reported Deceased" The record has Transaction Type = "Re-issued Possible Misuse"	The record has convictions and Admin Status = "Licensed in Another State or Jurisdiction" The record has convictions and Person Record Status has changed to "Eligible," "Not-Eligible," or "Eligible Non-CDL, Not Eligible CDL"	Daily	Every weekday, government holidays excluded	Daily	Every weekday, government holidays excluded	Yes	No	7	3
Utah	Convictions License Status (Negative Only)	Med Card Status Change License Class	Monthly	1st week of the month typically	Monthly	1st week of the month typically	No	No	7	3
Vermont	License Status (Negative Only)	License Expiration License Renewal	No	N/A	Monthly	1st week of the month typically	No	No	3	3
Virginia	New Violation Out of State Violation	License Status (Negative Only)	Daily	Every weekday, government holidays excluded	Daily	Every weekday, government holidays excluded	No	No	3	3

MVR MONITORING SERVICE (CONT.)

MVR MONITORING TRIGGERS



STATE	MVR REPORTING TRIGGERS		Violation Monitoring	When (Violation Monitoring)	Status & Suspension Monitoring	When (Status & Suspension Monitoring)	Annual Review Required?	State Requires Annual MVR?	CDL History Years	DL History Years
Washington	New Violation Out of State Violation Future Suspensions/ Revocations License Status (Positive, CDL Only)	License Status (Negative) License Expiration (CDL Only) License Renewal (CDL Only) New Accident Medical Certification Expiration/ Change (CDL Only)	Monthly	2nd week of the month typically	Monthly	2nd week of the month typically	No	No	5	5
West Virginia	New Violation Out of State Violation	License Status (Negative & Positive) License Expiration	Monthly	1st week of the month typically	Monthly	1st week of the month typically	No	No	3	3
Wisconsin (D2S)	New Violation Out of State Violation New Accident	Medical Certification Expiration/ Change License Class HazMat Endorsement	Weekly	1st week of the month typically	Weekly	1st week of the month typically	No	No	3	3
Wyoming	New Violation Out of State Violation	Future Suspensions/ Revocations	Monthly	1st week of the month typically	No	N/A	No	No	3	3

*An Annual Review is required in the driver qualification file

Data updated as of 2/10/25

Information provided is subject to change without notice.

License Status Positive Change includes Reinstatement, Renewal of Expired License

License Status Negative Change includes Cancellation, Suspension, Expiration, Withdrawal, Downgrade, Revocation and/or Surrender

Violations includes moving violations, citations, including after adjudication and conviction

OVN = Motor Vehicle Overnight Order

INST = Motor Vehicle Instant Order

Reference: Definitions

- **Annual MVR Required (currently three states)**
 - o The STATE has specific / detailed regulatory requirements that an MVR must be ordered for a driver 1x a year – e.g. state of California. OR, as is the case for MD and MI, the STATE is pushing an annual MVR to us based upon their requirements (regulatory or otherwise)
- **Annual Review (currently 14 states)**
 - o Based on J.J. Keller risk position, the triggers covered by the state do not adequately cover FMCSA guidance per 49 C.F.R. § 391.25 regulation or constitute continuous monitoring (ENS per FMCSA).
 - o Or that triggers do not fully align with MVR content (missing triggers), or otherwise miss critical elements.
- **Employer Notification Service (ENS)**
 - o A program that automatically sends updates to the requestor when a driver's license status changes, there is a crash, and/or a conviction is posted to the driver's record.
 - o The use of these services, in particular, those with "push" notifications, satisfies the Federal Motor Carrier Safety Administration's (FMCSA) requirement for a motor carrier to make an inquiry into each driver's record.

Reduce Risk with Constant Oversight of Your Drivers' Records

J. J. Keller's **MVR Monitoring Service** will help you take faster action to identify negative driving events that occur in your drivers' company or personal vehicles. Our advanced system and Compliance Advisor will monitor your drivers' records and help you...

- Remove unsafe drivers from the road quickly
- Provide timely corrective action training
- Reduce out-of-service orders

J. J. Keller's MVR Monitoring Service – it's smart risk management.

888.473.4638 | [JJKellerDataSense.com/mvr-monitoring](https://www.JJKellerDataSense.com/mvr-monitoring)

